

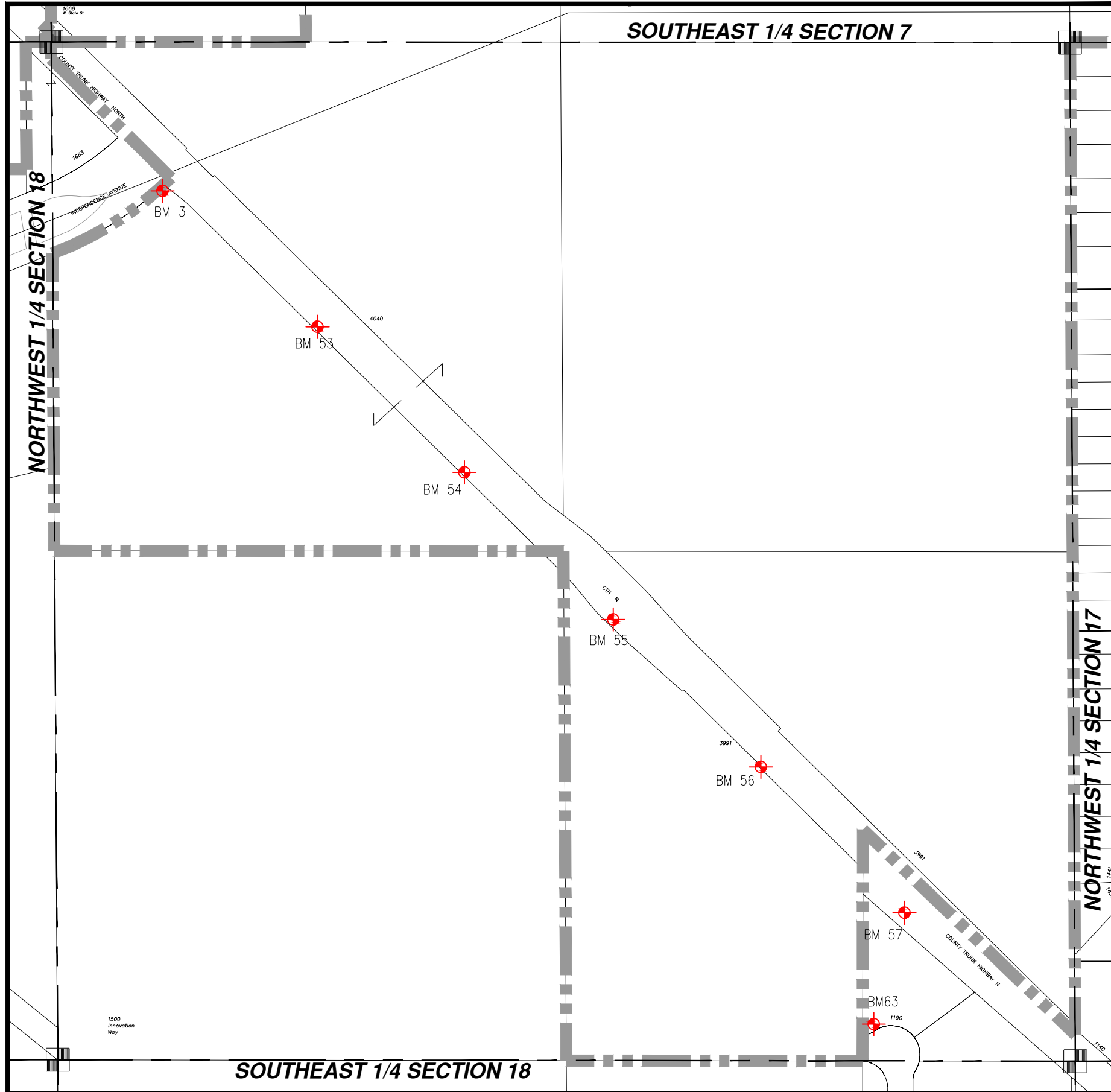


WASHINGTON COUNTY, T10 R18

NE 1/4 SECT 18

NE 18

- = Hyd. With NO Benchmark Info.
 - = Existing Benchmark
 - = Benchmark in Adjacent Section
- Users Should VERIFY all Benchmarks Information before use.**



| BM # | ELEV | DESCRIPTIONS |
|------|---------|--|
| 3 | 1012.09 | FIRE HYDRANT (NE BOLT W/TAG) SOUTH SIDE OF EAST BOUND LANE OF INDEPENDENCE AVE AT CTH "N" |
| 53 | 1005.5 | FIRE HYDRANT (SW BOLT @ ARROW) S. SIDE OF W. STATE ST. 40' +/- WEST OF P.P. #77-11300 |
| 54 | 1010.06 | FIRE HYDRANT (S BOLT @ ARROW) S. SIDE OF W. STATE ST. 20' +/- WEST OF P.P. #58-10863 |
| 55 | 1025.41 | FIRE HYDRANT (N BOLT @ ARROW) S. SIDE OF W. STATE ST. 20' +/- EAST OF P.P. #77-12363 |
| 56 | 1009.53 | FIRE HYDRANT (W BOLT @ ARROW FEATHERS) S. SIDE OF W. STATE ST. IN FARMYARD |
| 57 | 987.17 | FIRE HYDRANT (SW BOLT @ ARROW) S. SIDE OF W. STATE ST. BETWEEN P.P. #77-12368 & P.P. #81-04157 |
| 67 | 971.46' | FH NW BOLT W/TAG, AT WEST SIDE OF END OF WESTERN DR. CUL-DE-SAC |