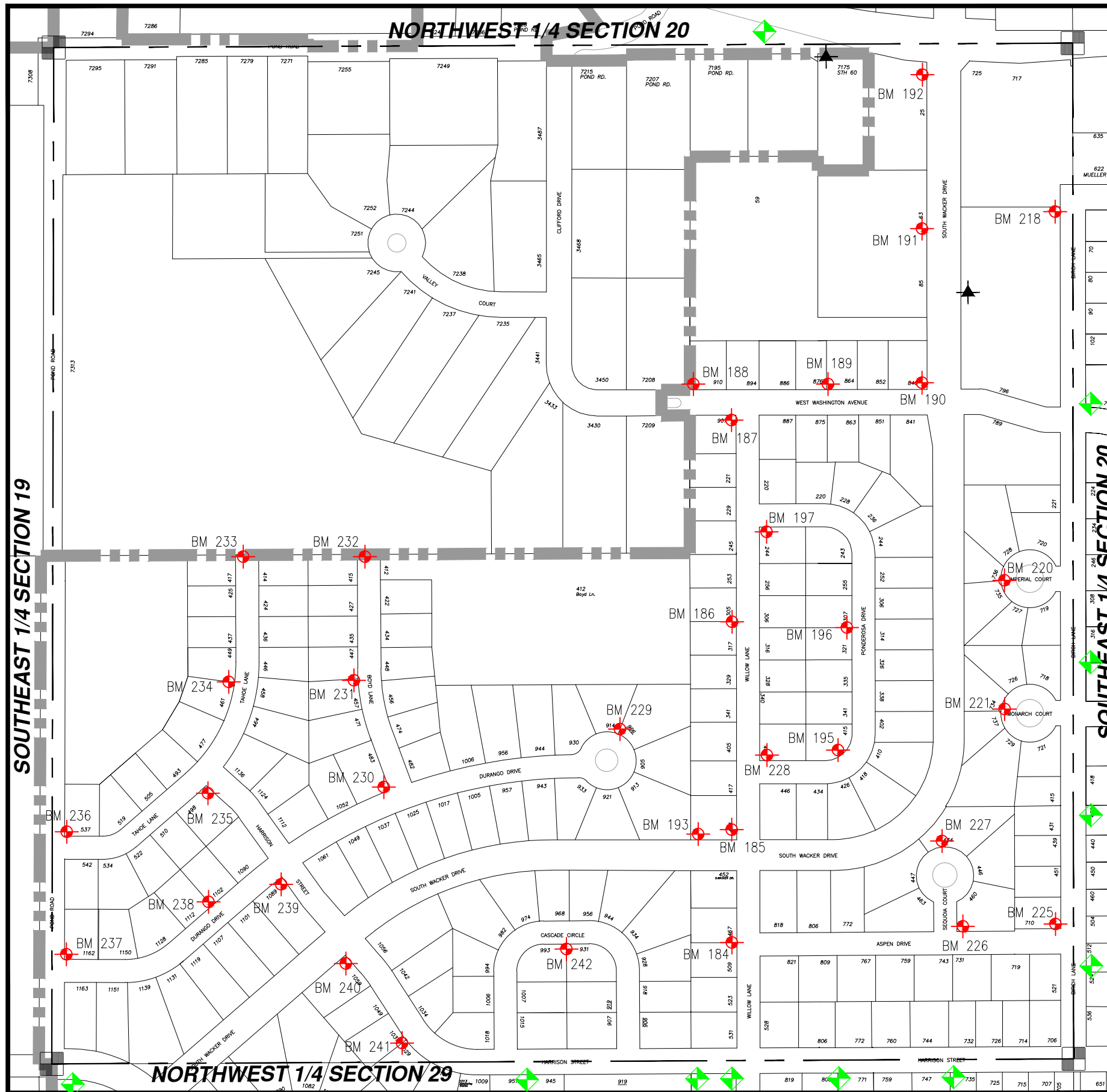




WASHINGTON COUNTY, T10 R18 SW 1/4 SECT 20

SW 20

= Hyd. With NO Benchmark Info.
 = Existing Benchmark
 = Benchmark in Adjacent Section
 Users Should **VERIFY** all Benchmarks Information before use.



BM #	ELEV	DESCRIPTIONS
184	999.35'	FIRE HYDRANT, BOLT W/ TAG, W/ SIDE WILLOW LN, BETWEEN HSE. #509 & #467
185	1001.09'	FIRE HYDRANT, BOLT W/ TAG, NW CORNER WILLOW LN. & S. WACKER DRIVE
186	1010.78'	FIRE HYDRANT, BOLT W/ TAG, W/ SIDE WILLOW LN, BETWEEN HSE. #317 & #305
187	1028.62'	FIRE HYDRANT, BOLT W/ TAG, SW CORNER WILLOW LN. & W. WASHINGTON AVE.
188	1040.38'	FIRE HYDRANT, BOLT W/ TAG, N/ SIDE W. WASHINGTON @ W/ LOT LINE OF HOUSE #910
189	1015.95'	FIRE HYDRANT, BOLT W/ TAG, N/ SIDE W. WASHINGTON BETWEEN HOUSE #876 & #864
190	1011.84'	FIRE HYDRANT, BOLT W/ TAG, NW CORNER W. WASHINGTON AVE. & S. WACKER DR. @ HSE # 840
191	1004.56'	FIRE HYDRANT, BOLT W/ TAG, W/S FUTURE S. WACKER DR. MIDWAY BETWEEN W. SUMNER(HWY 60) AND W. WASHINGTON AVE.
192	986.66'	FIRE HYDRANT, BOLT W/ TAG, SW CORNER FUTURE S. WACKER DR. AND W.SUMNER(HWY 60)
193	1001.01'	FIRE HYDRANT, BOLT W/ TAG, N/SIDE S.WACKER DR.@ W/EDGE DEAD END, @ SW CORNER OF LOT HOUSE #433 WILLOW
195	1003.73'	FIRE HYDRANT, BOLT W/ TAG, @ HOUSE # 415 PONDEROSA DRIVE, ON CURVE
196	1006.48'	FIRE HYDRANT, BOLT W/ TAG, W/ SIDE PONDEROSA DRIVE BETWEEN HOUSE #321 & #307
197	1019.34'	FIRE HYDRANT, BOLT W/ TAG, SE CORNER WILLOW LANE AND PONDEROSA DRIVE
218	980.08'	FIRE HYDRANT, NW. BOLT, W. SIDE OF BIRCH LANE AND MULLER ROAD
220	1026.81'	FIRE HYDRANT, SW. BOLT W/BURY TAG, W. END OF IMPERIAL COURT
221	1029.29'	FIRE HYDRANT, NW. BOLT W/BURY TAG, W. END MONARCH COURT
225	1004.05'	FIRE HYDRANT, NW. BOLT W/BURY TAG, NW. COR. OF ASPEN DRIVE AND BIRCH LANE @ #710 ASPEN LANE
226	1002.17'	FIRE HYDRANT, NW. BOLT W/BURY TAG, NE. COR. ASPEN DRIVE AND SEQUOIA COURT
227	1003.03'	FIRE HYDRANT, NW BOLT W/BURY TAG, N. END OF SEQUOIA COURT CUL D SAC @ HSE #434
228	1001.79'	FIRE HYDRANT, BOLT W/TAG, NE. COR WILLOW LANE AND PONDEROSA DRIVE
229	1004.37'	FIRE HYDRANT, N. BOLT W/TAG, N. SIDE END OF CUL D SAC ON DURANGO DRIVE
230	991.52'	FIRE HYDRANT, NW. BOLT W/TAG, NW. COR. OF BOYD LANE AND DURANGO DRIVE
231	991.69'	FIRE HYDRANT, SW. BOLT W/TAG, W. SIDE BOYD LANE @ HSE #457
232	992.69'	FIRE HYDRANT, NW BOLT W/BURY TAG, N. SIDE @ DEAD END OF BOYD LANE
233	993.15'	FIRE HYDRANT, NW. BOLT W/BURY TAG, N. SIDE @ DEAD END OF TAHOE LANE
234	993.99'	FIRE HYDRANT, SW. BOLT W/BURY TAG, W. SIDE TAHOE LANE @ #449
235	992.63'	FIRE HYDRANT, SE. BOLT W/BURY TAG, SE. COR. TAHOE LANE AND HARRISON STREET
236	994.20'	FIRE HYDRANT, NE. BOLT W/BURY TAG, NE. COR. TAHOE LANE AND POND ROAD
237	1007.16'	FIRE HYDRANT, NW. BOLT W/BURY TAG, NE. COR. DURANGO DRIVE AND POND ROAD
238	995.45'	FIRE HYDRANT, SW. BOLT W/BURY TAG, W. SIDE DURANGO DRIVE HSE #1112
239	992.36'	FIRE HYDRANT, SE. BOLT W/BURY TAG, SE. COR. DURANGO DRIVE AND HARRISON STREET
240	991.59'	FIRE HYDRANT, SW. BOLT W/BURY TAG, SE. COR. HARRISON STREET AND S. WACKER DRIVE, HSE. #1059 HARRISON STREET
241	993.15'	FIRE HYDRANT, SE. BOLT W/BURY TAG, S. SIDE HARRISON STREET @ HSE. #1037
242	998.61'	FIRE HYDRANT, SE. BOLT W/BURY TAG, S. SIDE CASCADE CIRCLE @ HSE #956