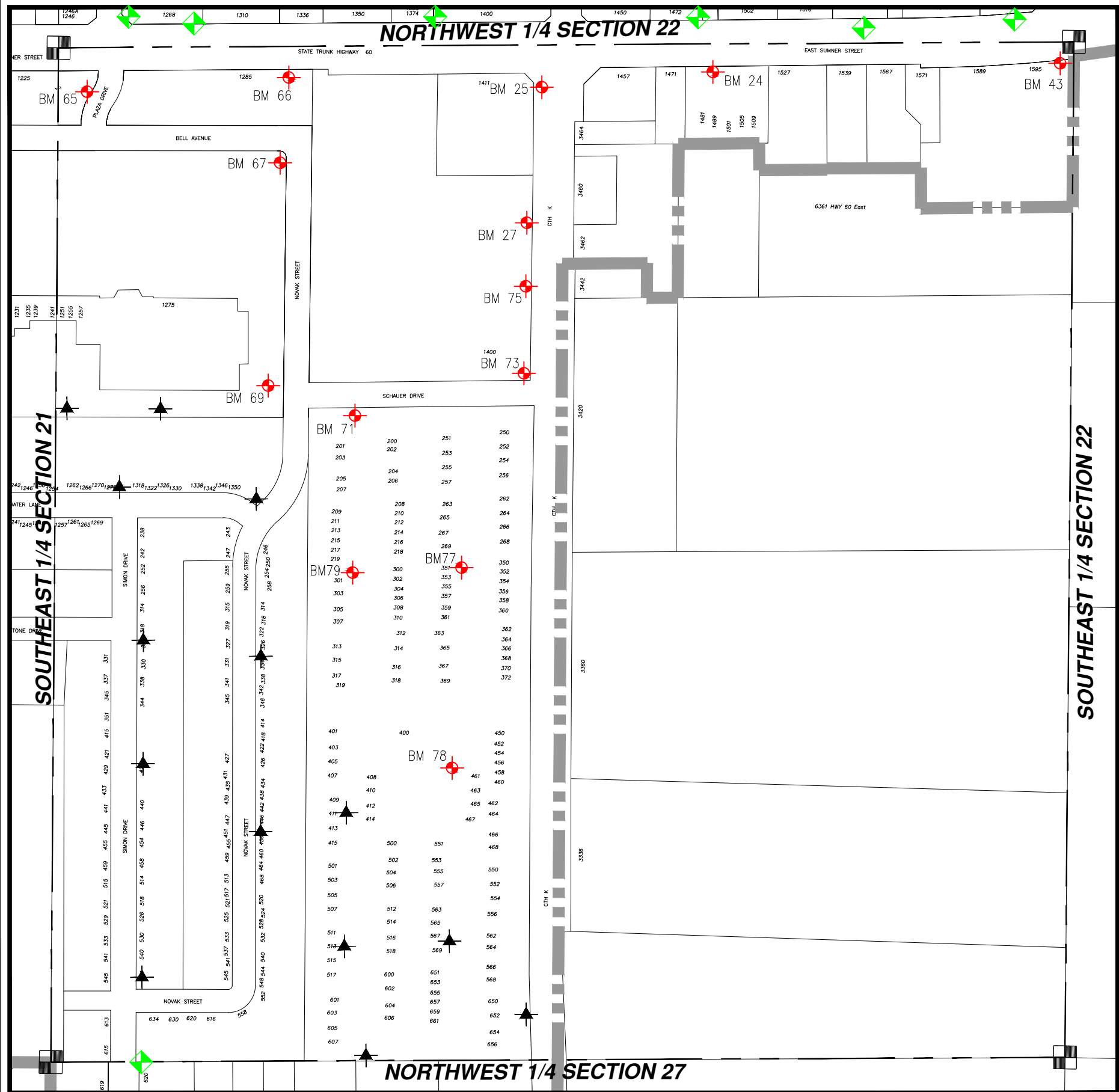




# WASHINGTON COUNTY, T10 R18 SW 1/4 SECT 22

# SW 22

= Hyd. With NO Benchmark Info.  
 = Existing Benchmark  
 = Benchmark in Adjacent Section  
 Users Should **VERIFY** all Benchmarks Information before use.



BM #	ELEV	DESCRIPTIONS
20	1018.31	FIRE HYDRANT (SE BOLT W/TAG) SOUTH SIDE OF HWY "60" AT INTERSECTION AT EAST SELL DRIVE
24	1003.95	FIRE HYDRANT (SE BOLT) SOUTH SIDE HWY"60" IN FRONT OF GEORGE WEBB'S
25	1009.35	FIRE HYDRANT (SW BOLT) (SW) CORNER ON INTERSECTION STH "60" AND CNTY "K", EAST OF KWIK TRIP
27	1028.8	RAILROAD SPIKE @ POWER POLE #80-08462, EAST SIDE OF POLE WEST SIDE OF CNTY "K" 1' ABOVE THE GROUND
43	1015.47	FIRE HYDRANT, NORTHWEST BOLT, SOUTH SIDE FO EAST HWY "60" AT HILLDALE
65	1021.53	D.O.T. GPS MONUMENT BRASS CAP IN CONCRETE, STAMPED 2K44 1999, WEST SIDE OF PLAZA DRIVE, EAST OF DAIRY QUEEN BUILDING
66	1011.86	NORTHWEST BOLT AT ARROWHEAD ON HYDRANT, NORTHEAST CORNER PONDEROSA PARKING LOT, SOUTH SIDE OF HWY "60"
67	1013.2	NORTH BOLT AT ARROWHEAD ON FIRE HYDRANT, SOUTHWEST CORNER BELL AVE. AND NOVAK STREET
69	1028.09	NE BOLT AT ARROWHEAD OF FIRE HYDRANT AT THE NW CORNER OF SCHAUER DR. AND NOVAK ST. ON SCHAUER EXTENDED WEST
71	1033.42	NE BOLT AT ARROWHEAD OF THE FIRE HYDRANT ON THE WEST SIDE OF THE WESTERLY DRIVEWAY FOR HARTFORD SQUARE
73	1046.81	NW BOLT AT ARROWHEAD ON THE FIRE HYDRANT AT THE NORTHWEST CORNER OF SCHAUER DR. AND HWY "K"
75	1036.54	SW BOLT OF THE FIRE HYDRANT ON THE WEST SIDE OF HWY "K" ACROSS FROM HOUSE #3442'S NORTH PROPERTY LINE EXTENDED WEST
77	1051.43	FIRE HYDRANT, NE OF BOLT AT ARROWHEAD, EASTERLY HARTFORD SQUARE PRIVATE DRIVE, IN FRONT OF BLDG. #351
78	1056.97	FIRE HYDRANT, NE OF BOLT AT ARROWHEAD, EASTERLY HARTFORD SQUARE PRIVATE DRIVE, IN FRONT OF BLDG. #461
79	1046.62	FIRE HYDRANT, SW OF BOLT AT ARROWHEAD, WESTERLY HARTFORD SQUARE PRIVATE DRIVE, IN FRONT OF BLDGS. #301 & #219