




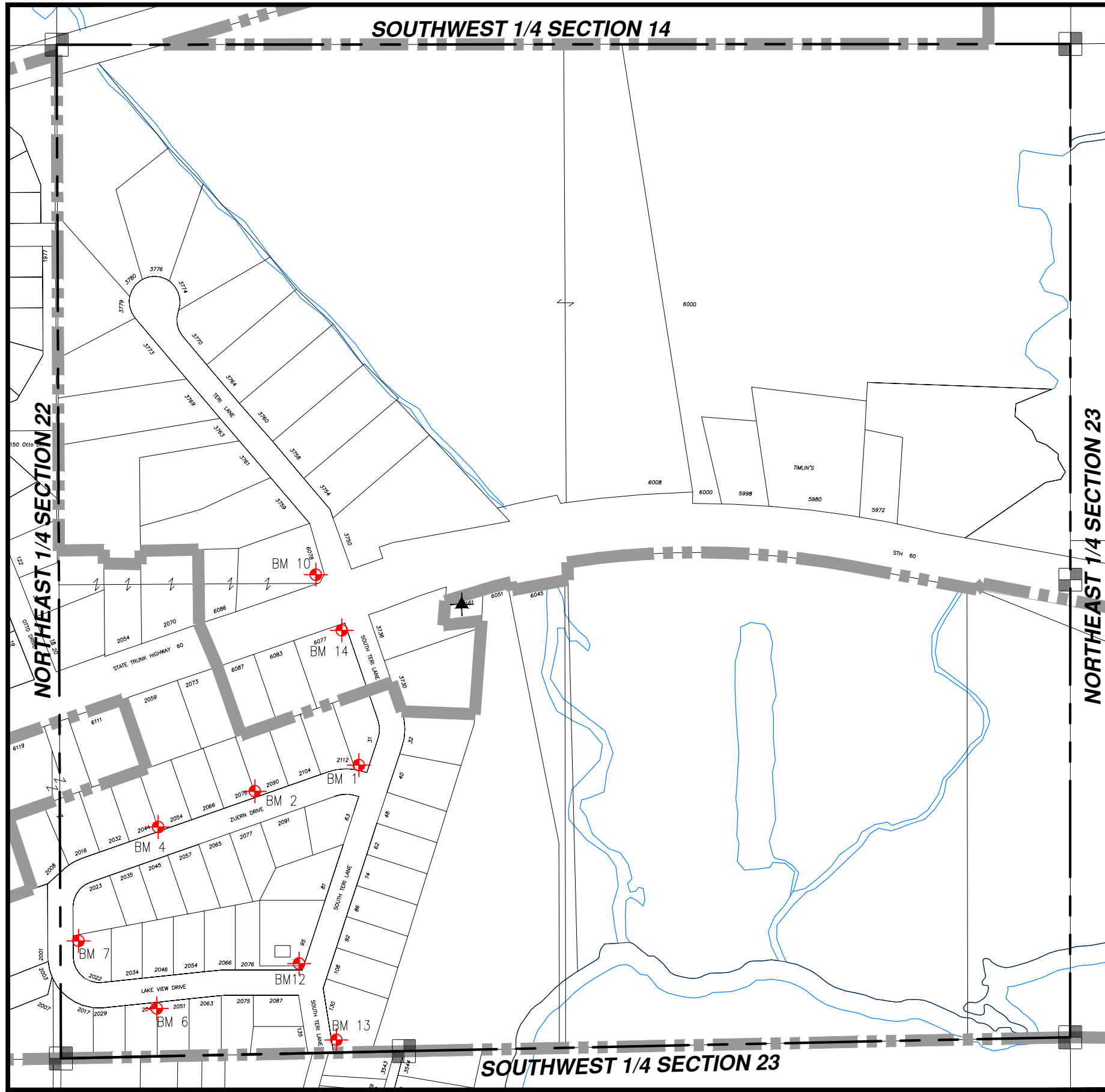


WASHINGTON COUNTY, T10 R18 NW 1/4 SECT 23

NW 23

-  = Hyd. With NO Benchmark Info.
-  = Existing Benchmark
-  = Benchmark in Adjacent Section

Users Should VERIFY all Benchmarks Information before use.



BM #	ELEV	DESCRIPTIONS
1	1018.38	FIRE HYDRANT, NW BOLT W/TAG, ON NORTH CORNER OF ZUERN DRIVE AND TERI LANE
2	1025.14	FIRE HYDRANT, NW BOLT W/TAG, ON NORTH SIDE OF ZUERN DRIVE ACROSS FROM HOUSE #2091
4	1011.86	FIRE HYDRANT, NW BOLT W/TAG, AT THE END OF ZUERN DRIVE ON THE WEST LOT LINE OF HOUSE #2054
6	1004.83	FIRE HYDRANT, SE BOLT W/TAG ON THE SOUTH SIDE OF LAKE VIEW DR. AT LOT # 19
7	1004.10	FIRE HYDRANT, NE BOLT W/TAG AT THE NORTH LOT LINE OF HOUSE #2022, ON THE EAST SIDE OF LAKE VIEW DRIVE
10	1023.24	FIRE HYDRANT ON THE WEST SIDE OF N. TERI LN, AT THE NW CORNER OF E/ "60" AND TERI LN, USE BOLT AT ARROW POINT ON FLANGE
12	1004.85	FIRE HYDRANT, BOLT AT ARROWHEAD, NW CORNER TERI LANE AND LAKE VIEW DRIVE, EAST SIDE WELL HOUSE
13	1006.66	FIRE HYDRANT, NE BOLT W/ TAG, EAST SIDE OF S. TERI LANE AT HOUSE #130
14	1025.68	FIRE HYDRANT, SW BOLT W/TAG, W. SIDE OF TERI LANE AT "60"